



Tay Valley Township

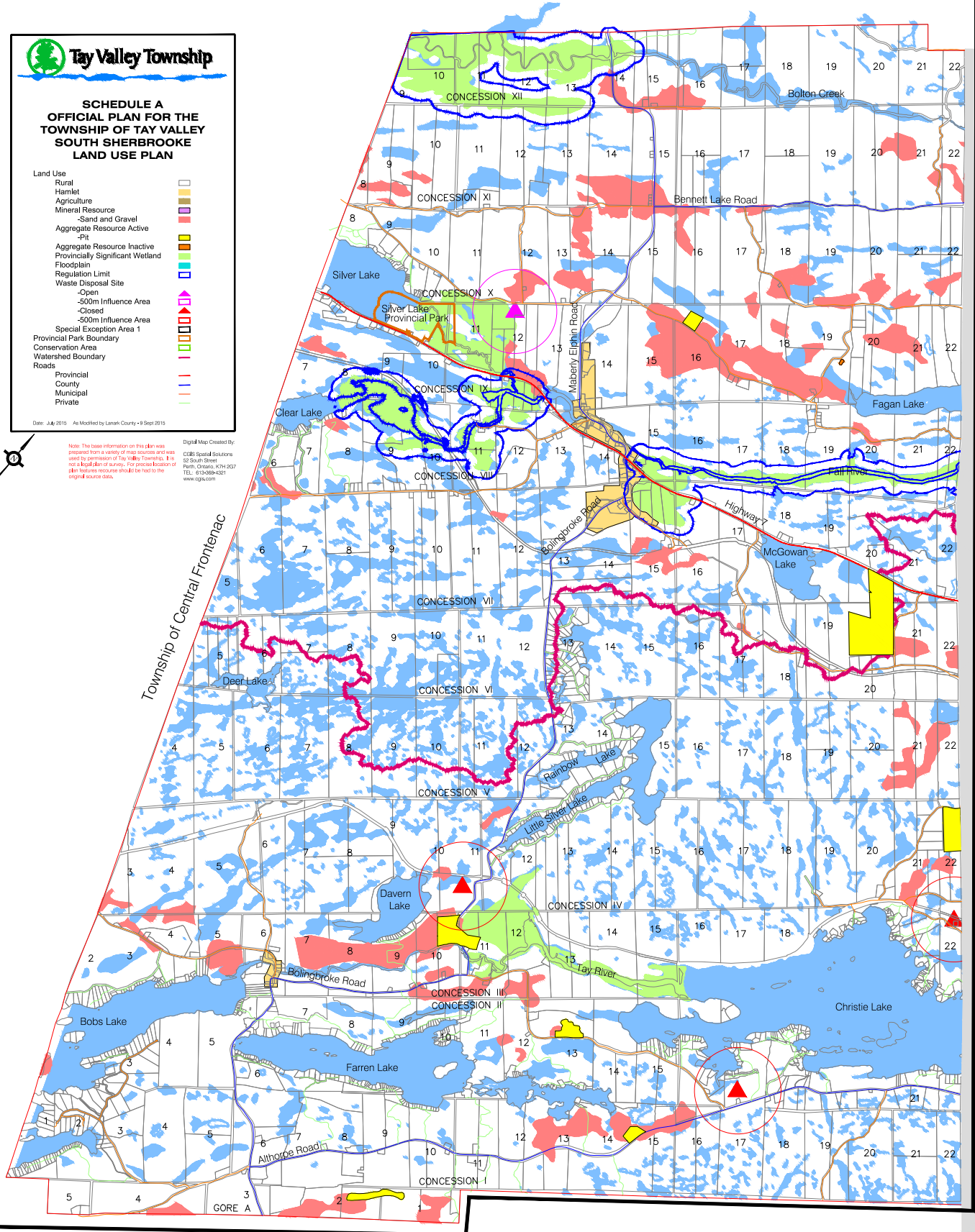
SCHEDULE A OFFICIAL PLAN FOR THE TOWNSHIP OF TAY VALLEY SOUTH SHERBROOKE LAND USE PLAN

- Land Use
- Rural
 - Hamlet
 - Agriculture
 - Mineral Resource
 - Sand and Gravel
 - Aggregate Resource Active
 - Pit
 - Aggregate Resource Inactive
 - Provincially Significant Wetland
 - Floodplain
 - Regulation Limit
 - Waste Disposal Site
 - Open
 - 500m Influence Area
 - Closed
 - 500m Influence Area
 - Special Exception Area 1
 - Provincial Park Boundary
 - Conservation Area
 - Watershed Boundary
 - Roads
 - Provincial
 - County
 - Municipal
 - Private

Date: July 2010 As Modified by Lennox County - 19 Sept 2010

Note: The base information on this plan was prepared from a variety of map sources and was used by permission of Tay Valley Township. It is not a legal land survey. For precise location of other features recourse should be had to the original source data.

Digital Map Created By
CGIS Spatial Solutions
55 South Street
Perth, Ontario, K7H 2C7
TEL: 613-926-5211
www.cgis.com



Township of Central Frontenac

Township of Rideau Lakes

GORE A