

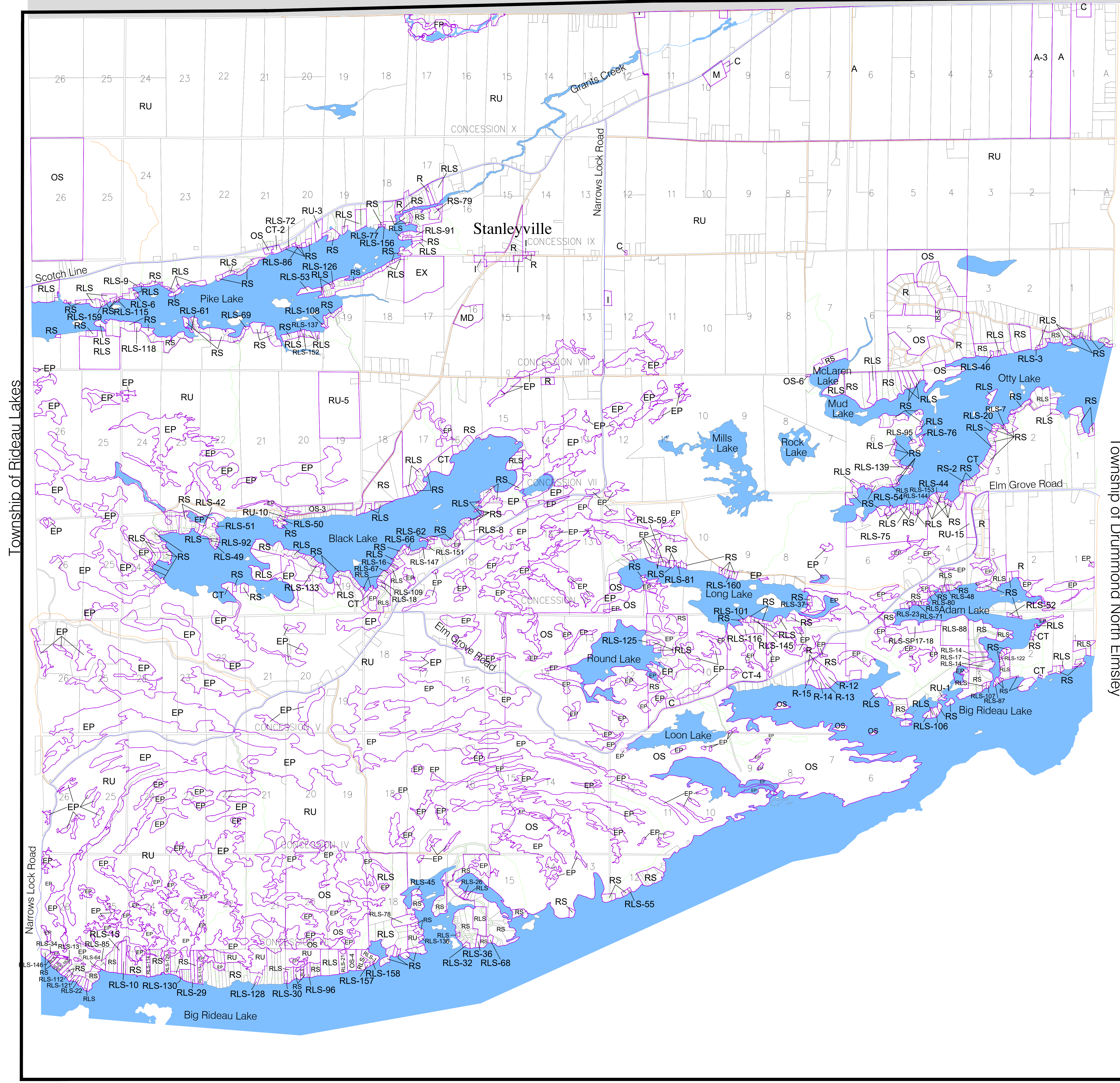


**ZONING BY-LAW  
NO. 02-121  
TOWNSHIP OF TAY VALLEY  
SCHEDULE B TO BYLAW NO.  
NORTH BURGESS**

Zoning Boundary	—
General Residential	R
Seasonal Residential	RS
Limited Services Residential	RLS
Mobile Home Park Residential	RMH
General Commercial	C
Local Commercial	CL
Tourist Commercial	CT
General Industrial	M
Salvage Yard Industrial	MS
Disposal Industrial	MD
Institutional	I
Open Space	OS
Rural	RU
Agriculture	A
Mineral Aggregate Extraction	EX
Flood Plain	FP
Environmental Protection	EP

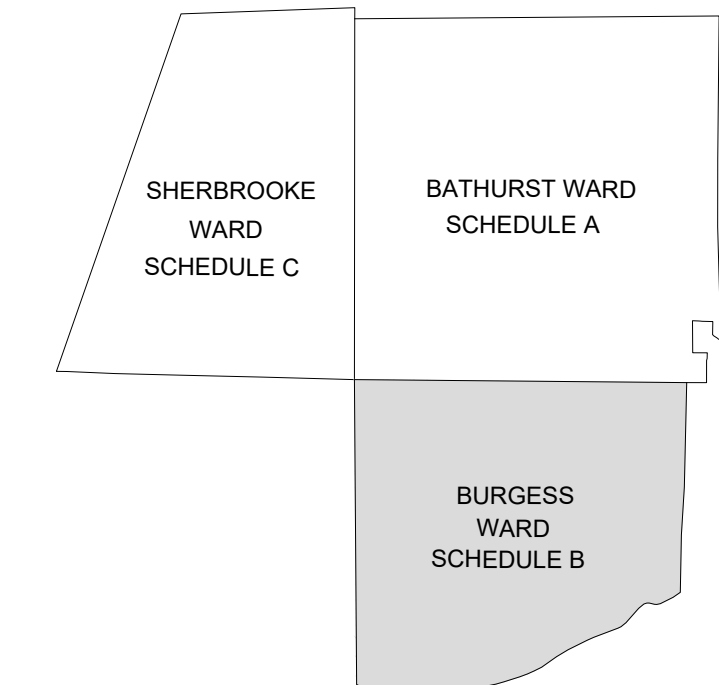
Note: All islands zoned RS unless otherwise indicated

Roads	
Provincial	—
County	—
Municipal	—
Private	—

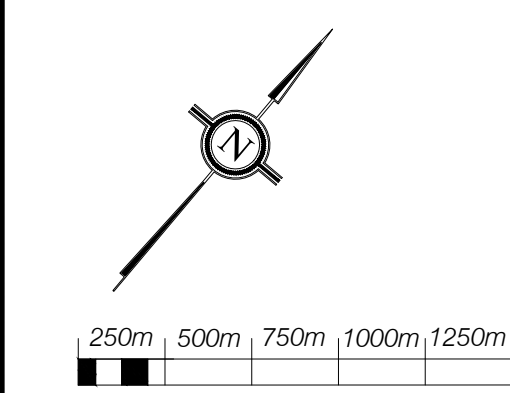


Township of Rideau Lakes

Township of Dummond North Emsley



Office Consolidation Date:  
Note: The base information on this plan was prepared from a variety of map sources and was used by permission of Tay Valley Township. It is not a legal plan of survey. For precise location of plan features recourse should be had to the original source data.



Digital Map Created By:  
CGIS Spatial Solutions  
52 South Street  
Perth, Ontario, K7H 2G7  
TEL: 613-968-4521  
www.cgis.com